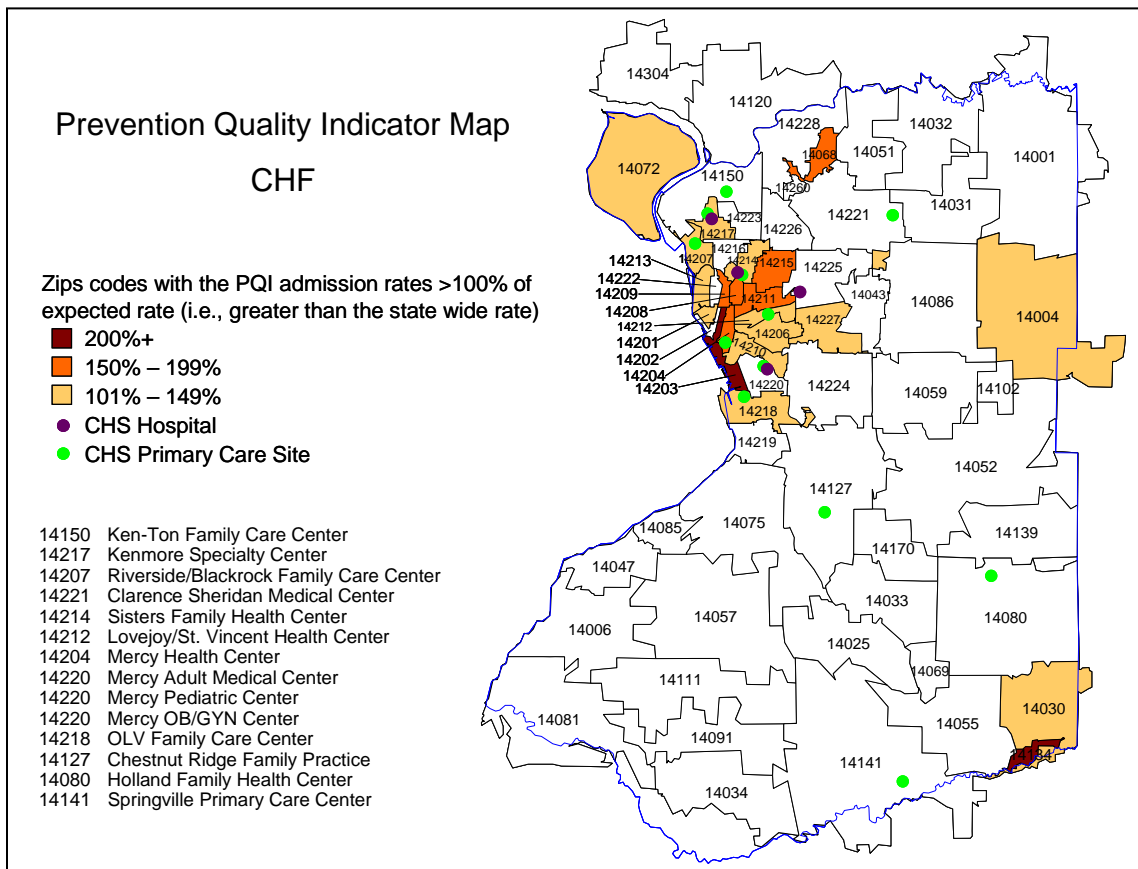
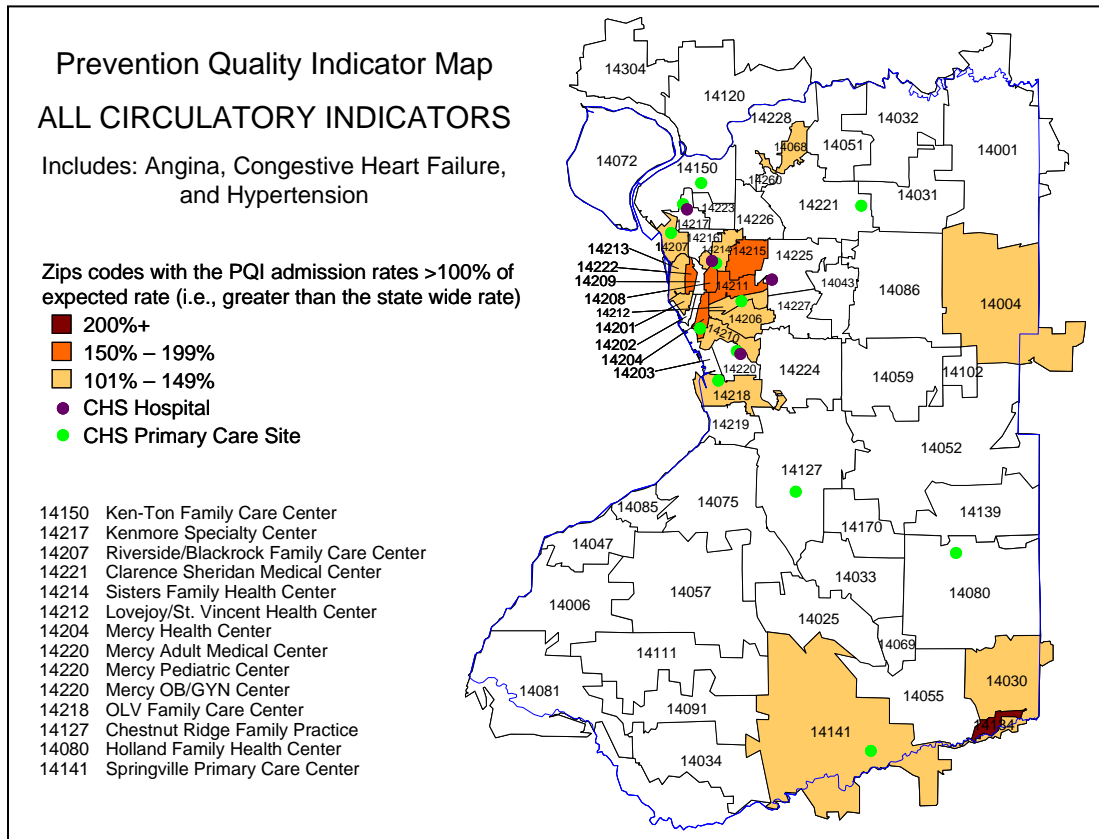


Attachment B

Prevention Quality Indicators (PQI)

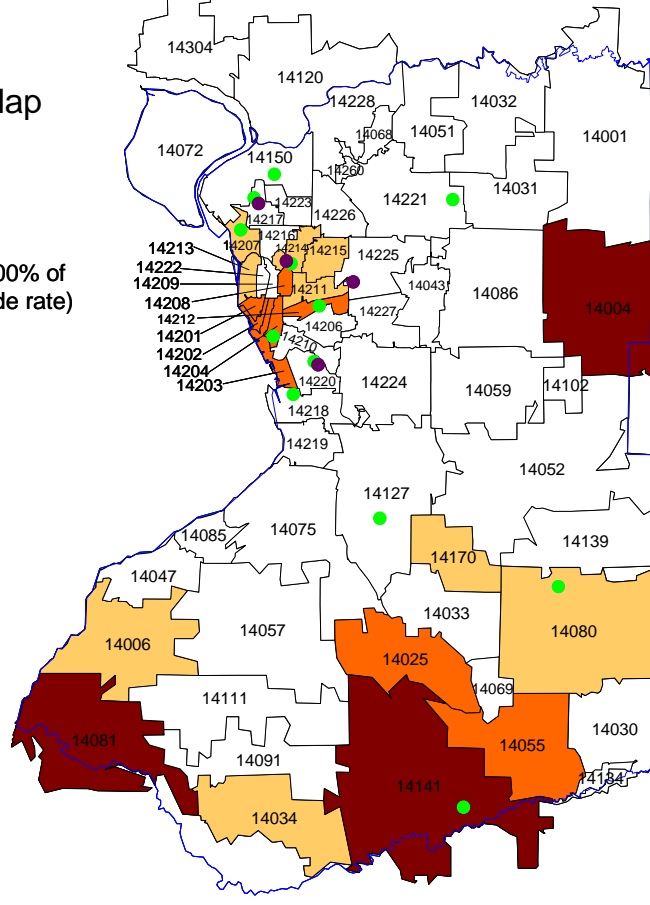


Prevention Quality Indicator Map ANGINA

Zips codes with the PQI admission rates >100% of expected rate (i.e., greater than the state wide rate)

- 200%+
- 150% – 199%
- 101% – 149%
- CHS Hospital
- CHS Primary Care Site

- 14150 Ken-Ton Family Care Center
- 14217 Kenmore Specialty Center
- 14207 Riverside/Blackrock Family Care Center
- 14221 Clarence Sheridan Medical Center
- 14214 Sisters Family Health Center
- 14212 Lovejoy/St. Vincent Health Center
- 14204 Mercy Health Center
- 14220 Mercy Adult Medical Center
- 14220 Mercy Pediatric Center
- 14220 Mercy OB/GYN Center
- 14218 OLV Family Care Center
- 14127 Chestnut Ridge Family Practice
- 14080 Holland Family Health Center
- 14141 Springville Primary Care Center



Prevention Quality Indicator Map ALL DIABETES INDICATORS

Includes: Short-term Complications, Long-term Complications, Lower Extremity Amputation, and Uncontrolled

Zips codes with the PQI admission rates >100% of expected rate (i.e., greater than the state wide rate)

- 200%+
- 150% – 199%
- 101% – 149%
- CHS Hospital
- CHS Primary Care Site

- 14150 Ken-Ton Family Care Center
- 14217 Kenmore Specialty Center
- 14207 Riverside/Blackrock Family Care Center
- 14221 Clarence Sheridan Medical Center
- 14214 Sisters Family Health Center
- 14212 Lovejoy/St. Vincent Health Center
- 14204 Mercy Health Center
- 14220 Mercy Adult Medical Center
- 14220 Mercy Pediatric Center
- 14220 Mercy OB/GYN Center
- 14218 OLV Family Care Center
- 14127 Chestnut Ridge Family Practice
- 14080 Holland Family Health Center
- 14141 Springville Primary Care Center

